

## TASK: Hangs or Raises Unevenly – 1” Cordless Horizontal Aluminum

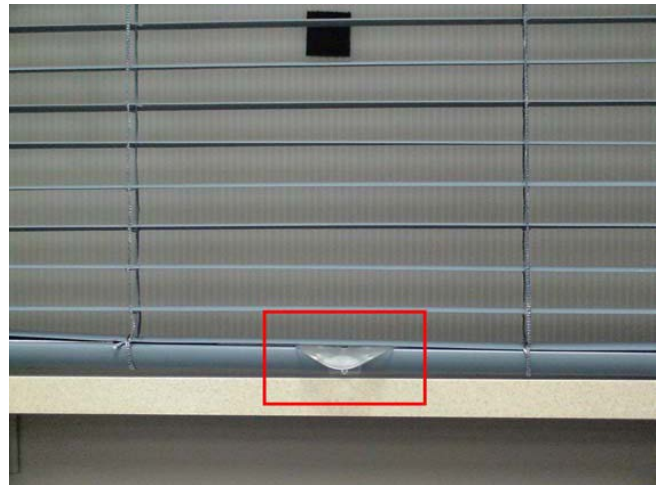
Use If/When: Cordless blind hangs or raises unevenly

Tools Needed: Level, Flathead screwdriver

1. Use a level to make sure the brackets, window, and mounting surface are level.



2. Make sure the handle is in the center of the bottomrail. If there are 2 handles, they need to be equal distance apart from the center.



3. Raise blind fully. Remove blind from installation brackets using a flathead screwdriver. Insert tip of screwdriver between the back of the headrail and the bracket.



4. Remove dust cover, starting with the top corner. Run your finger across the top. Put pressure on the back to remove.

**Note:** Do not remove end caps.

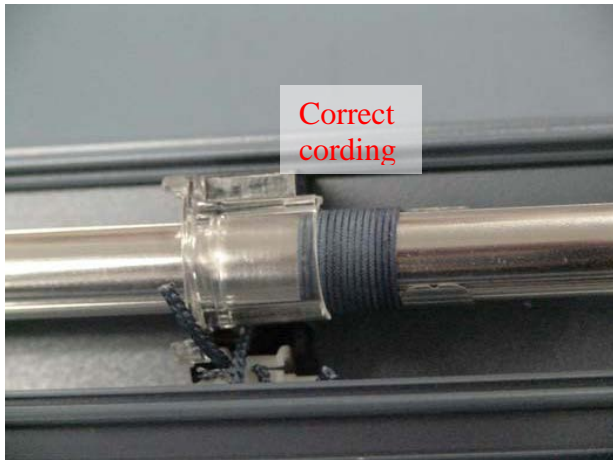


## TASK: Hangs or Raises Unevenly – 1” Cordless Horizontal Aluminum

Use If/When: Cordless blind hangs or raises unevenly

Tools Needed: Level, Flathead screwdriver

5. Make sure the cords are not twisted or overlapped in the headrail. If they are, lower the blind completely then raise slowly allowing the cords to wrap flat around the pinion rod.



6. Replace the dust cover. Raise and lower the blind several times to ensure proper operation.



7. Reinstall the blind back into brackets by attaching the front of shade to the front of the brackets and pushing back on the blind until it snaps into place.

